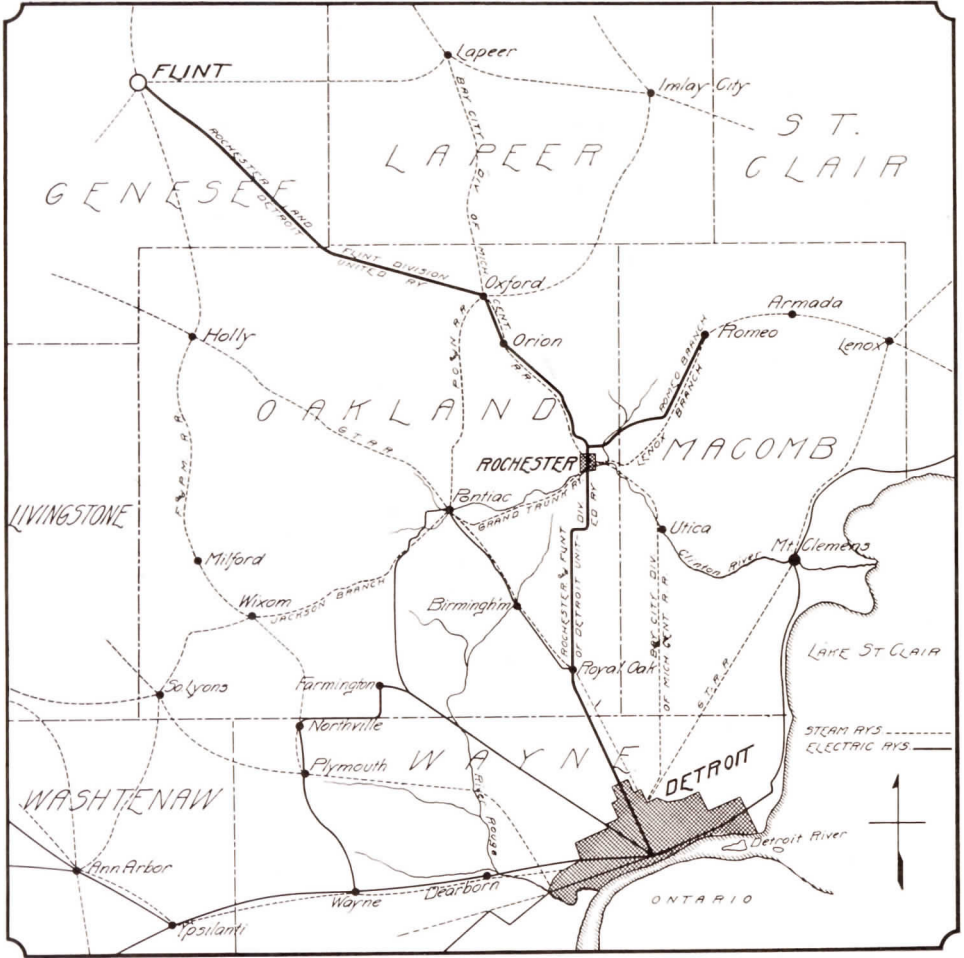

ROCHESTER



M I C H I G A N

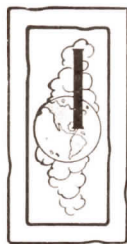
This pamphlet tells briefly of
the town of ROCHESTER
MICHIGAN - of its accessible
location, prosperous environment
of its moral and healthful tone
and of the advantages it offers
to manufacturing companies
desirous of locating in
south-eastern Michigan





Map of Southeastern Michigan

Rochester. Michigan

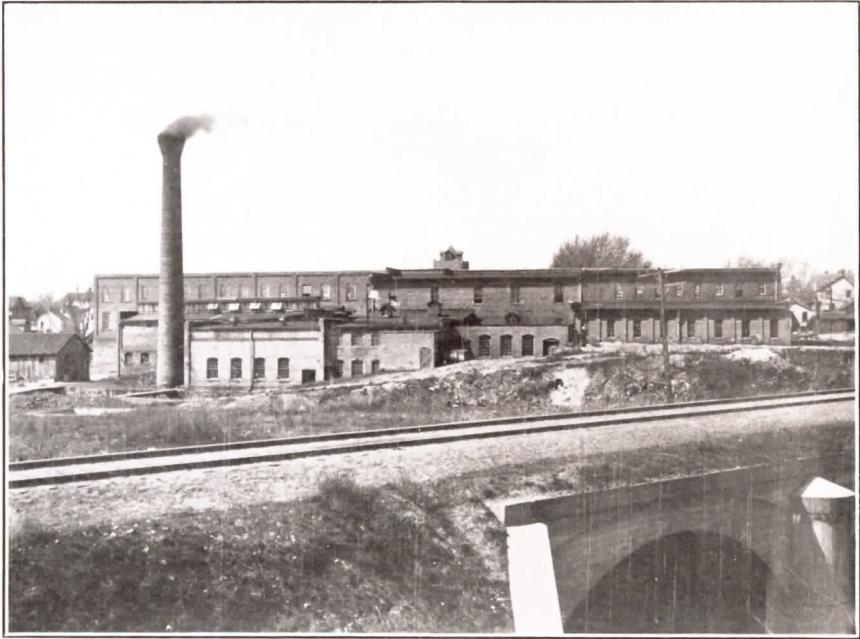


S situated in the eastern part of Oakland County, twenty-five miles due north of Detroit, at the junction of the Clinton River and Paint Creek. The tracks of the Michigan Air Line Division of the Grand Trunk Railway, following the grade of the Clinton, and the Bay City Division of the Michigan Central Railroad, doing likewise along Paint Creek, intersect at ROCHESTER thereby affording railroad outlets in every direction. In addition, ROCHESTER is the most important point on the Flint Division of the Detroit United Railway, an electric railway whose efficient and inexpensive freight and passenger service has been a potent factor in building up all the territory adjacent to Detroit.

Oakland County is famed throughout the State of Michigan for the fertility of its soil and the beauty of its lakes and



Birdseye View of Main Street



Western Knitting Mills

streams. Surroundings of this character combine to make ROCHESTER a healthy, prosperous town and its inhabitants a happy, thrifty lot of people.

The town, of two thousand people, is laid out on the plan followed in the far western states; a substantially constructed business section, broad streets flanked by huge trees and modern comfortable homes; neatly kept lawns outlined by miles of cement sidewalks. With such evidence at hand, it does not require a keen observer to perceive that behind all this lies a solidly united community of earnest, well-balanced people.

The existence of three banks, the Rochester Savings, the State Savings and the First National, tells its own story of business conditions in ROCHESTER and in the territory immediately surrounding it. Adjoining the town to the east is the splendidly equipped stock farm of Parke, Davis & Co., to the south the six hundred acre seed farm of D. M. Ferry

& Co., and in every direction dairy farms of the first rank. The accompanying pictures give an idea of the conditions hinted at in the foregoing paragraphs.

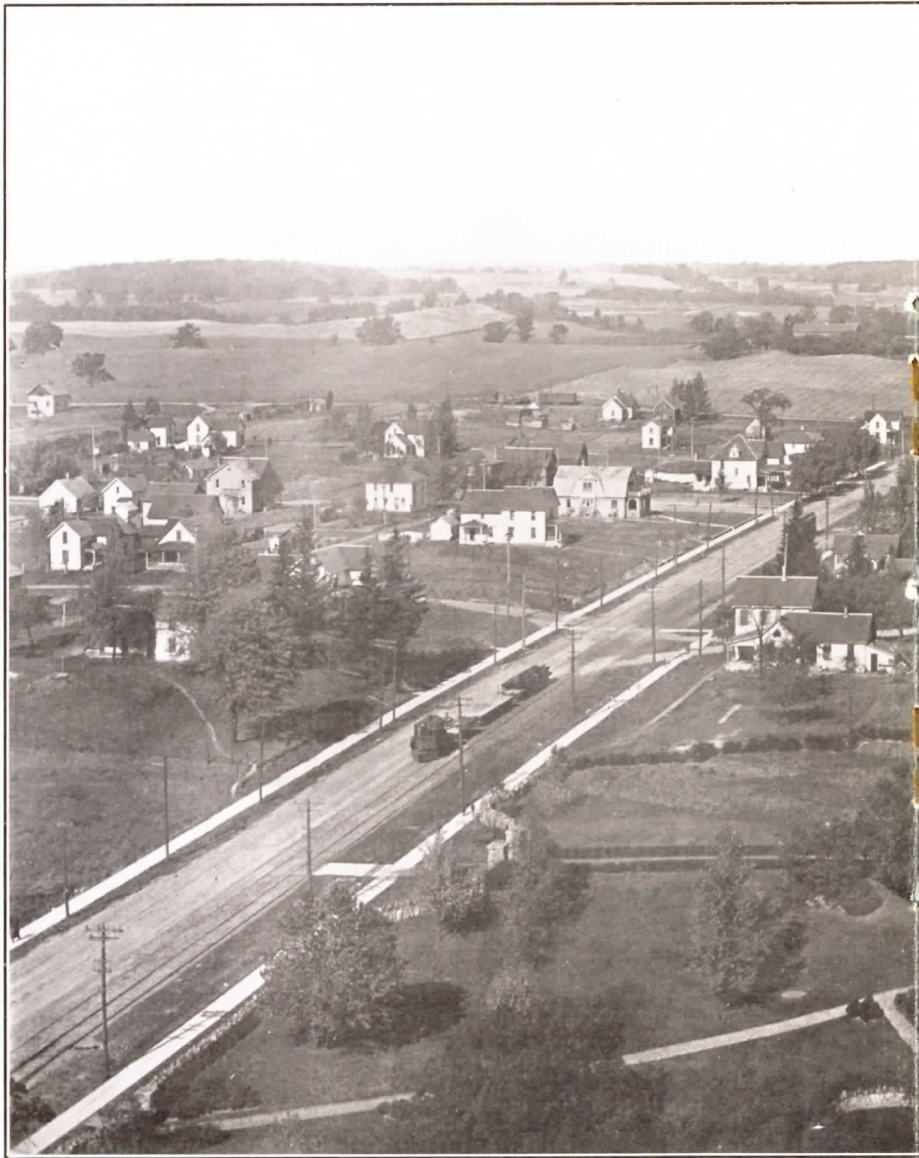
The Western Knitting Mills, ROCHESTER'S foremost industry, manufacture woolen articles of all kinds. The company's immense plant is located within a stone's throw of the town's main street and is advantageously placed with reference to railroad connections and a twenty-five foot waterfall in Paint Creek. When operated to its full capacity, as at present, the plant requires 300 employees.

In the south-east quarter of town are the Peninsular Paper Mills of the Barnes Paper Company. This plant has the unique distinction of having been operated steadily at the limit of its capacity for years.

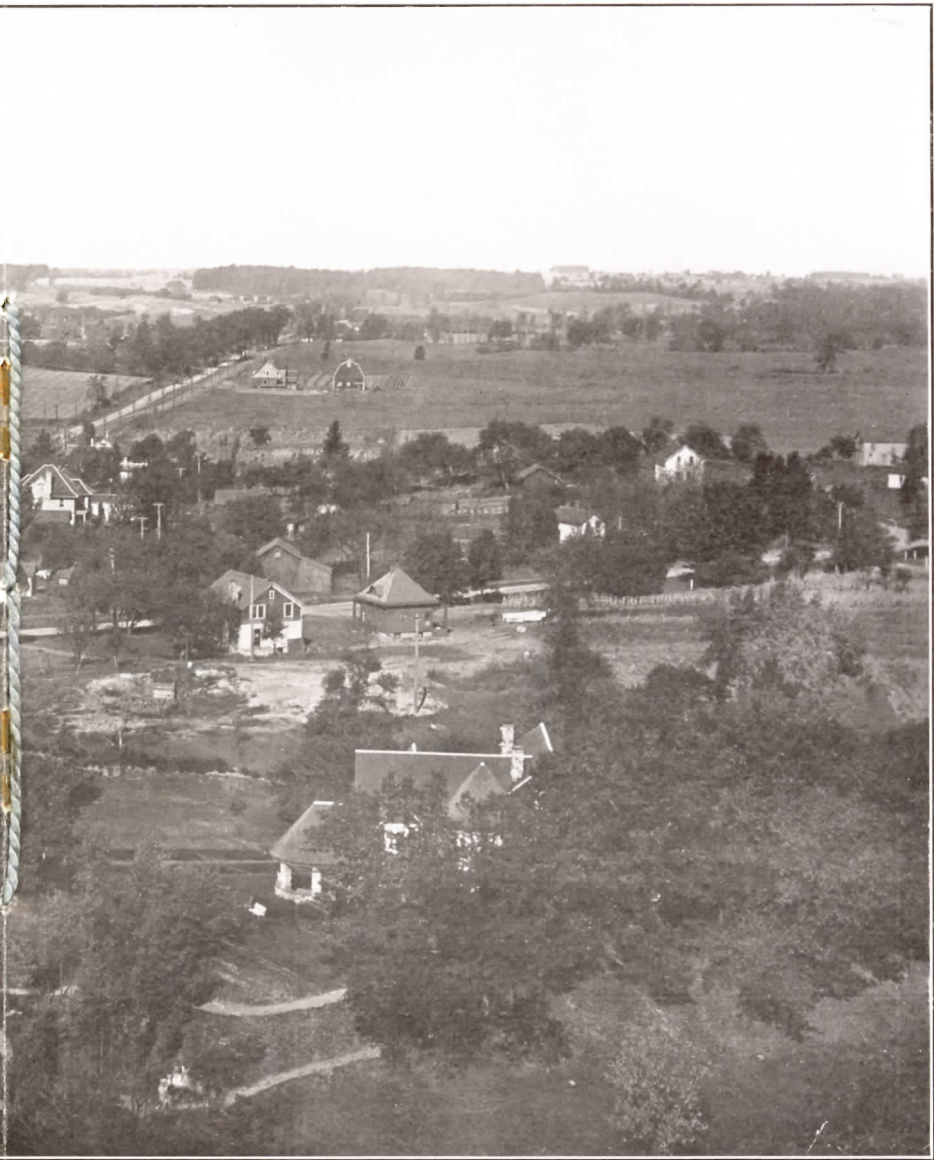
The electric power for operating the entire Flint Division of the Detroit United Railway is furnished by the Company's power-house, located in ROCHESTER. The power house is equipped with modern machinery, and has a capacity of four thousand horse-power. A large car barn and repair shop adjoins the power-house.

Educationally the town is well cared for. The citizens take a pride in the substantial commodious well appointed high school pictured herein. Located as it is on the western hill in the midst of a charming grove, the High School is in a spot ideal for its purpose. Plans are under way to secure the location here of a Carnegie Library.

In the matter of a pure water supply that combines both a minimum of investment and operating expense, ROCHESTER is notably fortunate. The water, of unsurpassed purity, is obtained from a number of flowing wells, three miles distant from the town. Two reservoirs of a combined capacity of over two and one-half million gallons, are located at the site of the wells. The reservoirs are of modern reinforced concrete construction, the largest one having been built in 1907.



Panorama of the Country Sur



Surrounding Rochester, Michigan



First National Bank

Their elevation is 160 feet above that of Main Street, so that a gravity pressure of sixty pounds or more is maintained on the system at all times. The cost of maintenance and operation of the water works is practically nothing.

Not the least of the advantages held out to Manufacturers in ROCHESTER, are the electric power rates offered by the Eastern Michigan Edison Company, whose sub-station is shown herein. This Company operates in all the territory contiguous to Detroit, and last fall completed in ROCHESTER, its sub-station, a model of its kind in the matter of fire-proof construction, reliability of service and general appearance. The current for its operation is transmitted from the Edison Company's huge steam generating station at Detroit. Electric power is offered to manufacturers both large and small, at

Detroit rates which are notably low. The ROCHESTER plant absolutely guarantees to meet every rate for electric power offered by the Edison Company of Detroit for the same class of service. This in itself should be a strong inducement to manufacturing institutions.

To sum up briefly; the citizens of ROCHESTER believe that there are manufacturing concerns without number who are anxious to share in the remarkable era of prosperity that has engulfed Detroit and vicinity, but who are unaware of the splendid opportunities open to them in this town. These have been touched on but lightly in this pamphlet. The town is not offering huge bonuses to any firms to locate their plants here. It *is* offering free sites, first class shipping facilities, low power rates, low taxes, and a community composed of law-abiding American people.



C. S. Chapman's Residence



Detroit United Railway — Powerhouse and Car Barns



*Office and Substation of Eastern Michigan
Edison Company*



Rochester High School



Reservoir Number Two

Inquiries will be cheerfully answered
and should be addressed to
Secretary Rochester Board of Commerce
Rochester, Michigan

